

Citizens Health Advisory Committee
October 3, 2008
8:40 am

Attendance: Jenny Wrenn, George Spreckles, Kathleen McGinness, Eileen Wasserbach, Dr. Tony DeMond, Lynn Westberg, Bill Warren, Bob Juskovich, Jeanine Justice, Marsha Porter Norton, Jill Patton.

History of effort:

- CHAC emerged from a community summit sponsored by Operation Healthy Communities in 2001—a broad mandate to work on access to health care
Broad community representation, citizen level involvement, addressed safety net measures
- Commissioned studies and collected data
- Determined to place initiative on ballot to form and finance a Health Services District
- Ballot issue failed in May 2006
- Valley Wide left the area
- County and city funded a study and a clinic, operated by Mercy Regional Medical Center
- Study completed by JSI included several recommendations—one is to again sponsor a ballot measure to support health care
- CHAC met with Rick Reiter—determined timing was not right to put a measure on the 2008 ballot when we couldn't find the right 500 word statement early in the year
- Many people felt a smaller group was needed to determine the direction—Health Services Steering Committee was made up of people with “purse strings”—county, city, MRMC, SJBH, SWCMHC

State Representative Ellen Roberts requested a citizens meeting to discuss two documents that she commissioned from the Colorado Institute of Health. This meeting was held on September 5. The outcome of that meeting was a consensus that we need to begin at the community level to lay the groundwork for La Plata County strategic plan for Health Care. The plan should be a detailed document. A grant from the Colorado Health Foundation, if funded, would provide staff to facilitate this plan.

As we get started, our task prior to grant funding is to develop a white paper that addresses the “what” we are trying to accomplish. There have been several studies and lots of information and data collected to date. There are identified 14 implementation issues (there are probably more). These will be addressed in the strategic plan.

The group listed principles that should be considered in the development of a plan

- Terminology—change “patient” to “person” in vision and other definitions
- **Integrated health care**—we have definition from Glenn Rodey—need to make sure we have defined what it means for La Plata County
- Include an environmental scan/needs assessment—some has already been done
- We need to discuss health care as “**assisting people to achieve optimum health, not as treating disease**”

- There should be a continuum of resources for assisting people to maintain health from “**health to hospice**”
- We should include promotion of health
- All efforts should be **patient (person?)-focused**, NOT illness-focused, agency focused or profit focused
- We are looking for **person-centered** services
- **Multiple entry points to system**—persons should all get treatment regardless of which entry portal is used

The group identified some goals for the plan

Goals for Health Care System

- Includes vision care
- Adequately funded
- Integrated (per local definition)
- Geographic diversity access
- Access includes treatment that is reasonable (cost and procedures), timely, sustained, effective and easy
- Businesses should be highly engaged in development of plan and invested in implementation
- Must include prevention of disease and unhealthy behaviors
- Must not be Durango-centric
- Include a review of successful models in practice other places
- Definition of complementary care and how it should be included
- Decentralized—including school-based; also identify roles for MRMC, HSC, SJBHD, Senior Centers, SWCMHC, SUCAP
- Assesses implementation of Electronic Medical Records systems (EMRs)
- Must be flexible and responsive to changing needs and environments
- Comprehensive referral system
- Includes baseline measurement of needs and tools for re-measurement (especially prenatal care needs and transportation)
- Identifies “what” and includes specifics, i.e. Community Clinic? Where? Hours open? Days open? Virtual services as well as physical? Full EMR?
- Explores possibility of movable services
- Addresses **governance**
- Is a facility the answer?
- Does not compete with existing services
- **Education** of community and providers
- 24-hour medical hotline

We need a work session on **Integration**

- Vertical and horizontal integration
- Definition of health
- Necessitates EMR—develop a reciprocal system

- Identifies community partnerships, including transportation
- Utilizes **telemedicine**
- Build on existing pockets of integration, i.e. SWCMHC at school based clinics and at Stop-gap clinic, or prenatal coordination with pediatric practices
- Incorporate Colorado Clinical Guidelines Collaborative—workshop for providers sponsored by HLLP

We need to figure out how to manage system navigation—concept of **wellness coaches** or **health care advocates**

Other terms and definitions—what does this mean for us in La Plata County?:

Integration

Medical (or health care) home

Case management

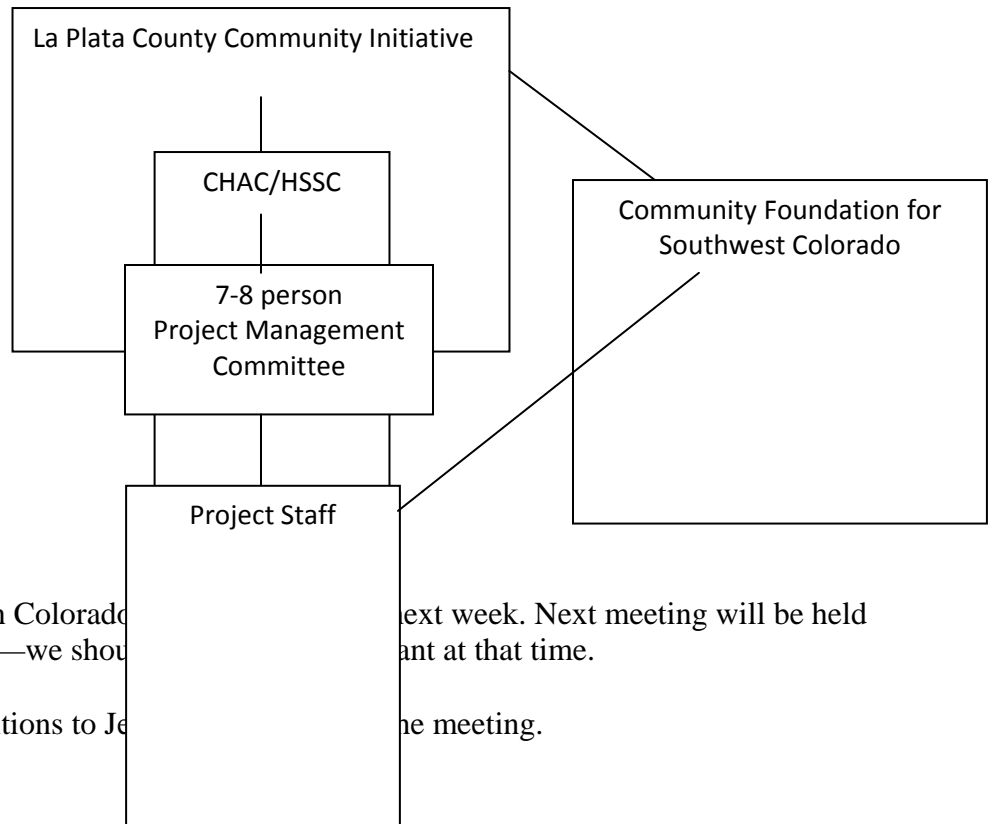
Electronic Medical Records

Virtual Services

The group looked at developing a structure for the CHF grant

The grant will fund a strategic planning process which will enable a group to change from the Steering Committee to an Implementation Team at the completion of the project

Proposed Project Management Chart:



There will be a meeting with Colorado... second Friday in November—we should

next week. Next meeting will be held... ant at that time.

Please send terms and definitions to Je...

the meeting.